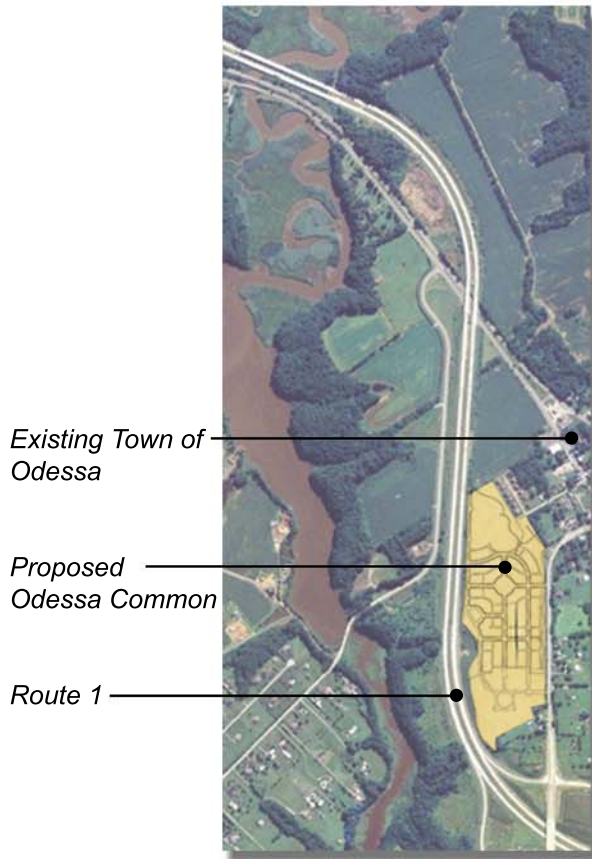


THE PROPOSED COMMUNITY OF ODESSA COMMON

Odessa, Delaware



Existing Town of Odessa

Proposed Odessa Common

Route 1

The Putnam Group's Thomas Payne envisioned a traditional neighborhood development for a 48-acre tract of land located between the historic village of Odessa and the nearby Route 1 bypass. TCA and the Odessa-based R.G. Architects LLC prepared a Conceptual Land Use Plan depicting a variety of housing types in close proximity to a new elementary school and a proposed retail area serving both Odessa residents and Route 1 travelers.

The Conceptual Land Use Plan depicts a proposed hotel, neighborhood businesses, office space, the proposed school, an expanded Odessa Memorial Park, and shared parking facilities. Local planners and municipal representatives have enthusiastically embraced these preliminary neighborhood concepts and the required zoning text amendments that will permit such traditional development patterns.



*TCA's Conceptual
Land Use Plan*